

# Storm Water Management on Constance Street and in Rouge Park in 2015

This fact sheet provides details on the storm water management project for a section of Constance Street and Rouge Park proposed by the Detroit Water and Sewerage Department (DWSD) in summer 2015. As more project information becomes available, DWSD will update this fact sheet.

## What's happening on Constance Street and Rouge Park in 2015?

The Detroit Department of Public Works (DPW) plans to resurface Constance Street, as well as other surrounding residential streets in 2015. Construction will start in early summer. As part of this project, DPW and DWSD identified an opportunity to work together to remove storm water from the combined sewer system to help manage storm water runoff more effectively.

## What type of storm water practices would DWSD construct along Constance Street?

DWSD proposes to install new storm pipes on Constance Street from Beaverland Street to Parkland Street to intercept storm water before it drains to the combined sewer. A combined sewer carries both sanitary sewage and storm water. A new storm sewer will help reduce basement flooding and overflows to the Rouge River caused by storms that overload the combined sewer system.



*Example of an above ground basin.*

## What type of storm water Practices would DWSD construct in Rouge Park?

DWSD proposes to install a storm water storage facility in Rouge Park just east of Constance Street to temporarily store the storm water collected from Constance Street. The storage facility can be either an above ground basin or an underground basin. The basin would slow down the storm water during large events and would allow rain from smaller storms to infiltrate into the ground within 48 hours. Larger flows would be discharged to the existing outlet to Bigalow Creek, tributary to the Rouge River.



Above Ground Basin Concept  
Constance and Parkland  
DRAFT Feb. 12, 2015



*Above ground basin concept.*

## How would an above ground basin impact Rouge Park?

An above ground basin would impact approximately 2 acres of land within Rouge Park during construction. One to 1.5 acres would be excavated to a depth of 8 feet with gradual side slopes to help the basin blend into the landscape of the park. The 8-foot depth is needed to capture the storm water discharging from the proposed storm sewer on Constance Street. Natural vegetation within the bottom of the basin would provide wildlife habitat. The water depth within the basin would be about 1 to 2 feet deep during a majority of storm events. It would take a 10-year storm event to increase the water depth to 2.5 feet. Outside of storm events, the basin would be dry with natural vegetation. A berm around a portion of the basin would allow overland flow to bypass the basin and continue along its current route.

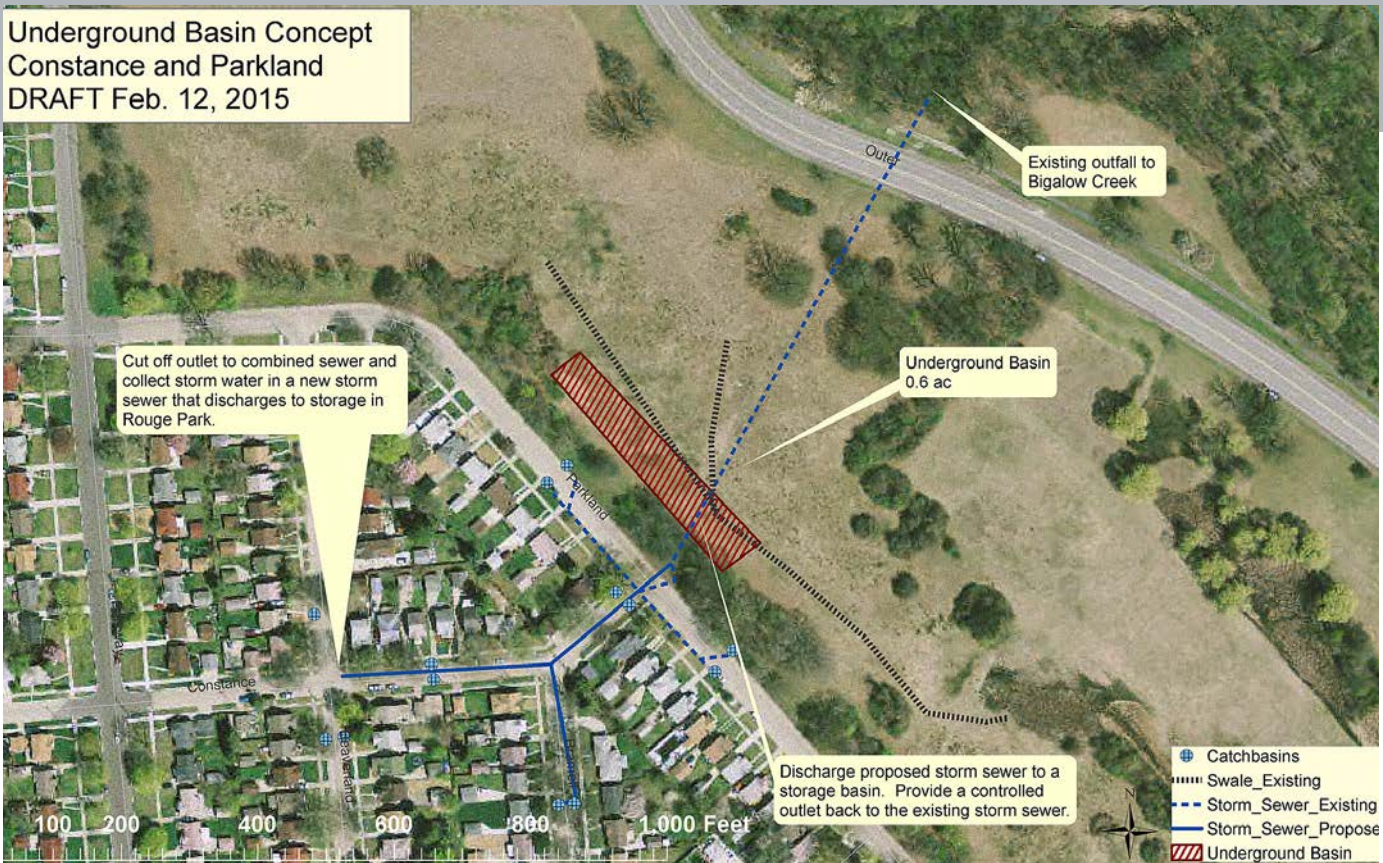
## How would an underground basin impact Rouge Park?

An underground basin would impact approximately 1 acre of land within Rouge Park during construction. One-half to 0.75 acre would be excavated to a depth of 8 feet to capture the storm water discharging from the proposed storm sewer on Constance Street. After installation of the underground storage system, the ground surface would be restored to its existing condition using vegetation acceptable to Friends of Rouge Park.



*Example of underground basin installation*

Underground Basin Concept  
Constance and Parkland  
DRAFT Feb. 12, 2015



*Underground basin concept.*

## Who is responsible for maintaining the storage basin?

DWSD is responsible for maintaining the basin and storm sewer system.

## Where will residents park during road resurfacing and storm sewer construction?

Driveways would be accessible at the end of each day. Roadside parking would not be available during the 2- to 4-week construction of the storm sewers.

## What is the project schedule?

The project would begin in May or June 2015 and last approximately 3 to 4 months. The storm sewer construction on Constance Street will take 2 to 4 weeks. Residents along Constance Street will receive notification 2 weeks prior to construction.

## Who can residents call if there are questions or problems with the basin once it is installed?

If Friends of Rouge Park or visitors to Rouge Park have questions or concerns about the basin once it is installed, they can call DWSD at the 24-hour emergency hotline (313-267-7401) or email [public.affairs@dwsd.org](mailto:public.affairs@dwsd.org). It is important to DWSD to know if there are problems with the basin or any questions on proper maintenance or functioning.

## Where can I get more information and how can I share my thoughts?

DWSD will provide updates about the Constance Street and Rouge Park project on their website ([www.dwsd.org](http://www.dwsd.org)). More technical information about detention basins and how they work is available in Chapter 7 of SEMCOG's Low Impact Development Manual (<http://www.semcog.org/lowimpactdevelopmentreference.aspx>).

If you have questions or concerns about the basin project, please contact Dan Schechter at 313-297-6408 or [dschecht@dwsd.org](mailto:dschecht@dwsd.org).

If you have questions or concerns about road resurfacing, please contact Jihad Slim 313-224-3947 or [slimj@detroitmi.gov](mailto:slimj@detroitmi.gov).

