

How to Disconnect a Downspout

Supplies

- work gloves • eye protection • dust mask • hacksaw
- measuring tape • marker • pliers • screwdriver
- downspout elbow and extension

Supplies needed in Step 4

For **straight** pipe use rubber cap with hose clamp
For **bell** pipe use concrete, chicken wire, newspaper, bucket

Step 1

Determine if the pipe where the downspout attaches is a bell shape or straight.



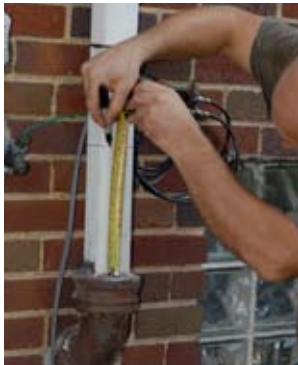
Straight Pipe



Bell Shape Pipe

Step 2

Measure approximately 9" from where the downspout enters the storm drain pipe.



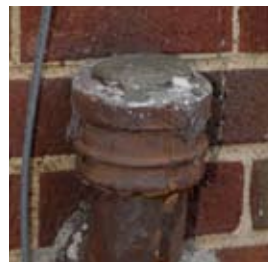
Step 3



Cut the downspout with a hacksaw where you measured and right above where the downspout enters the pipe. Remove that section of downspout.

Step 4

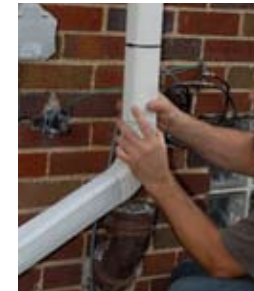
Bell Shape Pipe: Cut about 1 foot by 1 foot amount of chicken wire and form into cup shape. Place into the pipe just below the bell. Add crumpled newspaper on top of the mesh (this will help ensure the concrete doesn't leak down into the sewer). Mix the concrete according to directions (stiff mixture) and add concrete until it is flush with top of bell.



Straight Pipe: Cap the sewer pipe. This prevents water from going in. In most cases, you should be able to use a rubber cap secured by a hose clamp. Use a screwdriver or ratchet to tighten the cap until it is secure.



Step 5



Insert the downspout into the elbow. You may need to crimp the end of the downspout with a pair of pliers to get a good fit. (You may want to secure the downspout with a screw or rivet).

Step 6

Attach a downspout extension to carry water away from the house and foundation. We recommend 5 feet in a direction away from foundations, sidewalks and driveways. It is critical to make sure that disconnecting your downspout and redirecting the water does not cause a hazard or nuisance to you or your neighbors!

