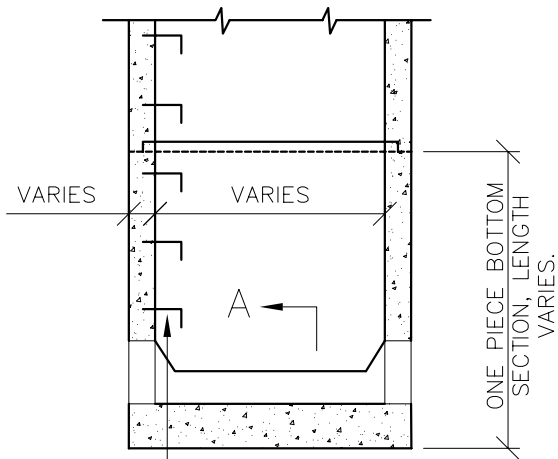
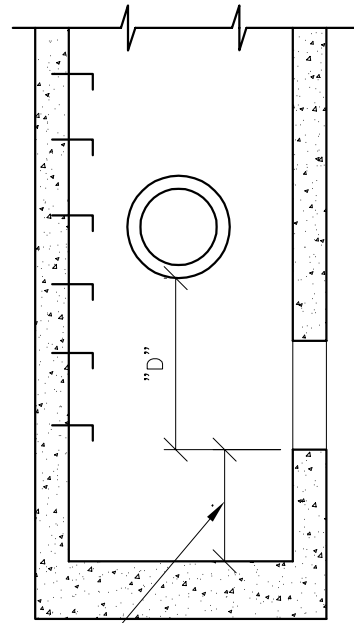


SECTION A-A



STEPS SHALL BE PLACED IN RISER BY MANUFACTURER



WATER CUSHION AS NOTED ON PLANS (C)

DIFFERENCE BETWEEN HIGHEST INLET AND OUTLET INVERTS (D)	DEPTH OF CUSHION (C)
2'-6" TO 4'-0"	12"
4'-0" TO 5'-6"	18"
5'-6" TO 8'-0"	24"
8'-0" TO 10'-0"	30"
OVER 10'-0"	36"

NOTE

1. ALL OTHER REQUIREMENTS SAME AS FOR PRECAST MANHOLE RISER SECTIONS,
2. FOR PIPE SIZE AND INVERT SEE PLAN AND PROFILE.

C					
B					
A					
	DESCRIPTION	DRW	CKD	APP	DATE
REVISIONS					
DRAWN BY: S.D.A.					
CHECKED BY: S.D.A.					
APPROVED:					

**MANHOLE,
PRECAST
BOTTOMS
AND WATER
CUSHION**

SCALE: NONE

CITY OF DETROIT
WATER AND SEWERAGE
DEPARTMENT
ENGINEERING
DIVISION

SHEET 1 OF 1

DWG No. 02600-02