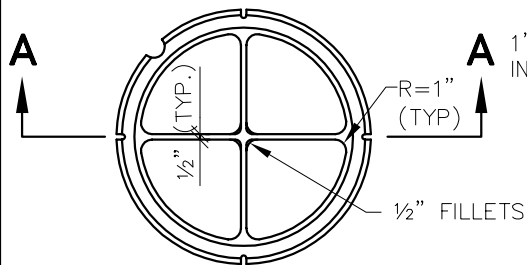


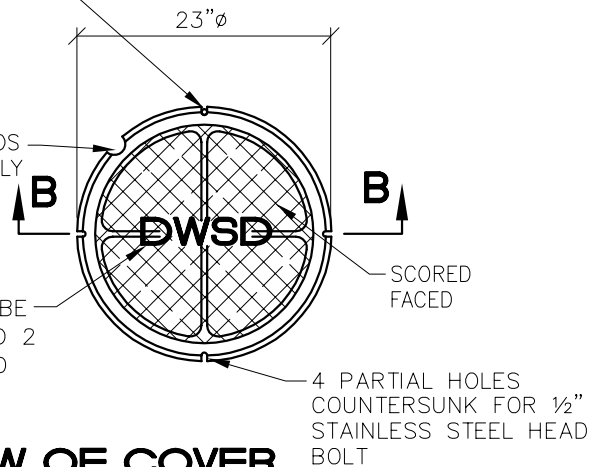
DRILL, TAP AND COUNTERSINK FRAME & COVER AS REQUIRED FOR S.S. HEAD BOLT (4 REQUIRED). THE COUNTERSINK IS TO HAVE A MINIMUM DIAMETER OF 1-7/16" AT THE SURFACE.



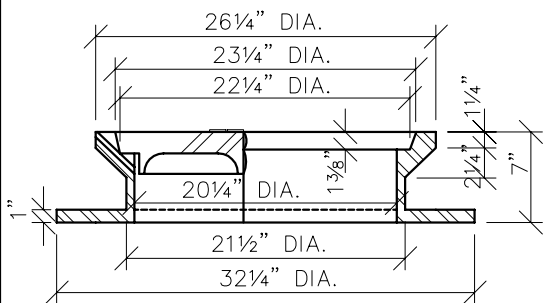
BOTTOM VIEW OF COVER

1" RADIUS PICKHOLDS IN SOLID COVER ONLY

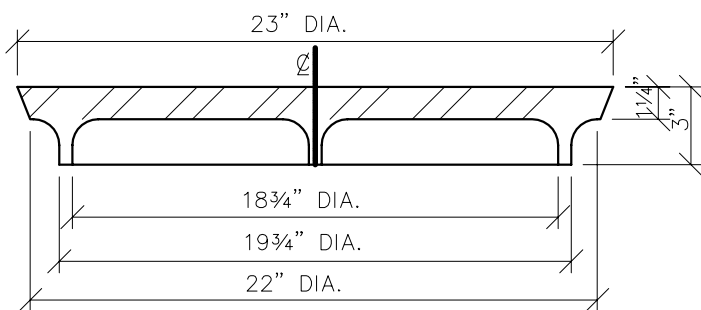
LETTERS TO BE 3/8" WIDE AND 2 3/4" HIGH AND RAISED 1/8"



PLAN VIEW OF COVER

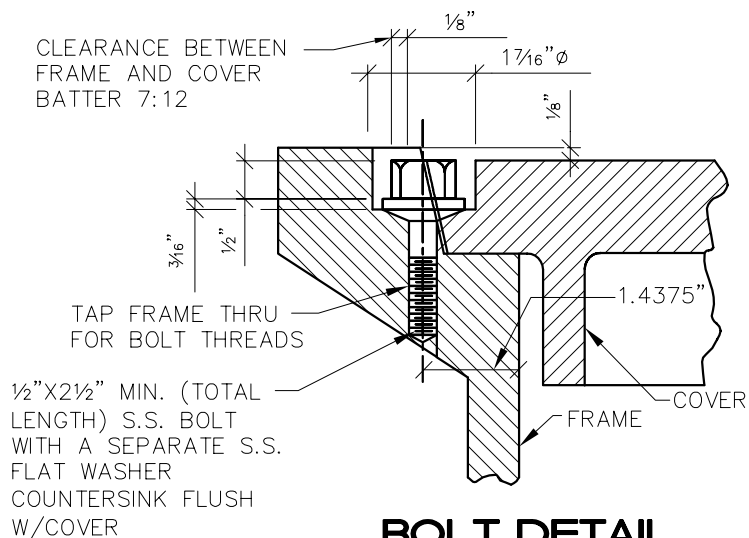


SECTION A-A

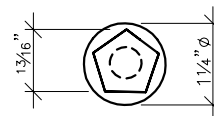


SECTION B-B

CLEARANCE BETWEEN FRAME AND COVER BATTER 7:12



BOLT DETAIL



PLAN VIEW OF BOLT

NOTES

1. FRAME & COVER TO BE GRAY IRON CASTING, ASTM A48, CLASS 30B
 TOTAL WT. = 409# (PERF. COVER)
 MANHOLE FRAME = 262#
 COVER (PERF) = 147#
 COVER (BLANK) = 157#
 THE SEATING FACE OF THE COVER & SEAT FOR SAME ON THE FRAME SHALL BE MACHINE FINISHED OR THE EQUIVALENT THEREOF SO THAT THE COVER SHALL HAVE AN EVEN BEARING ON ITS SEAT AT ALL POINTS WITHOUT ROCKING OR TILTING.
2. FOR 1/2" BOLT: NO. 13 NATIONAL STD COURSE THD.

C					
B					
A					
	DESCRIPTION	DRW	CKD	APP	DATE
REVISIONS					
DRAWN BY: S.D.A.					
CHECKED BY: S.D.A.					
APPROVED:					

MANHOLE, COVER WITH FRAME

SCALE: NONE

CITY OF DETROIT
 WATER AND SEWERAGE
 DEPARTMENT
 ENGINEERING
 DIVISION

SHEET 1 OF 1

DWG No. 02600-07