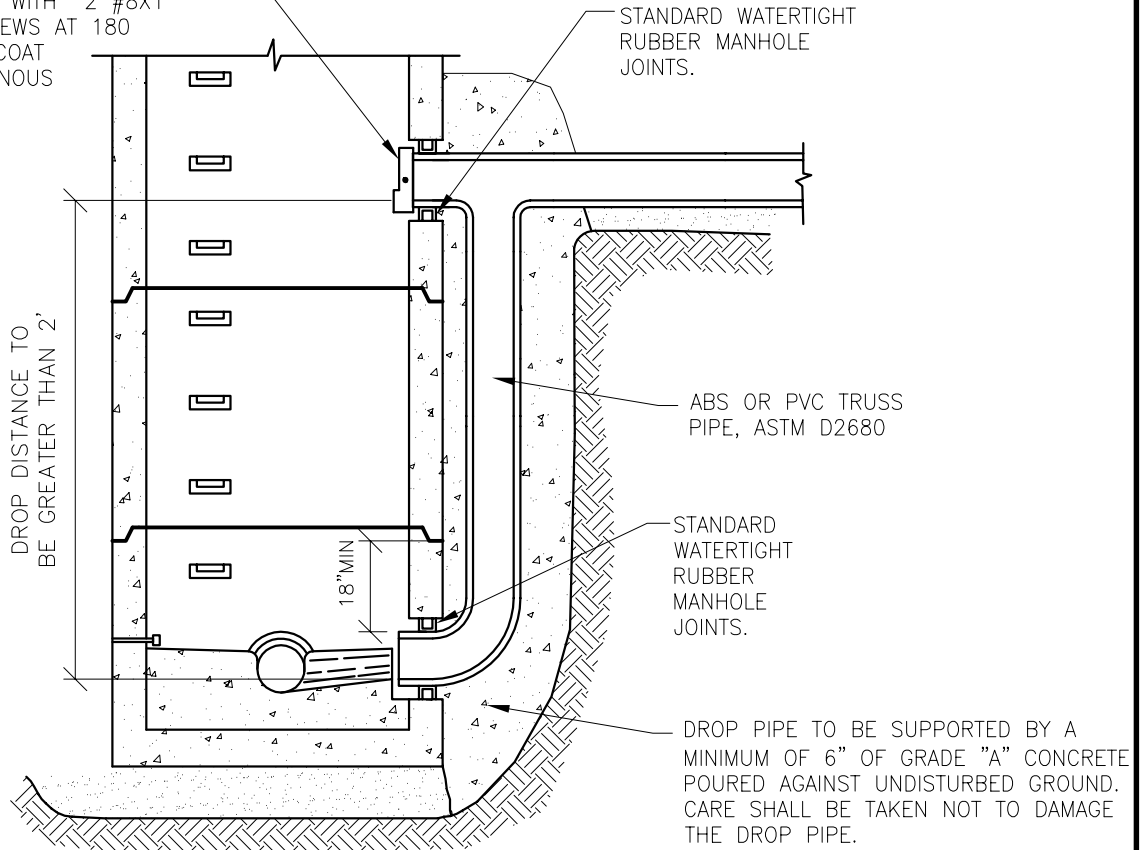


SEWER PIPE SIZE	DROP PIPE SIZE
8"–15"	8"
18"–27"	12"
30"–42"	18"
48"–54"	24"

SEE STANDARD MANHOLE DRAWING FOR OTHER MANHOLE DETAILS.

REMOVABLE PIPE CAP, SLIP-ON FIT (TOP TWO THIRDS OF END REMOVED) SECURE IN PLACE WITH 2 #8X1" SHEET METAL SCREWS AT 180 DEGREES APART. COAT SCREWS W/BITUMINOUS SEALER.



TAPS TO EXISTING MANHOLES SHALL BE MADE BY CORING USING A KOR-N-SEAL BOOT (OR APPROVED EQUAL).

C					
B					
A					
	DESCRIPTION	DRW	CKD	APP	DATE
REVISIONS					
DRAWN BY: S.D.A.					
CHECKED BY: S.D.A.					
APPROVED:					

MANHOLE, EXTERIOR DROP

SCALE: NONE

CITY OF DETROIT
WATER AND SEWERAGE
DEPARTMENT
ENGINEERING
DIVISION

SHEET 1 OF 1

DWG No. 02600-10