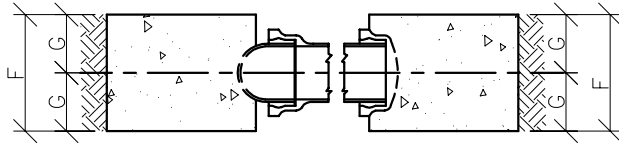
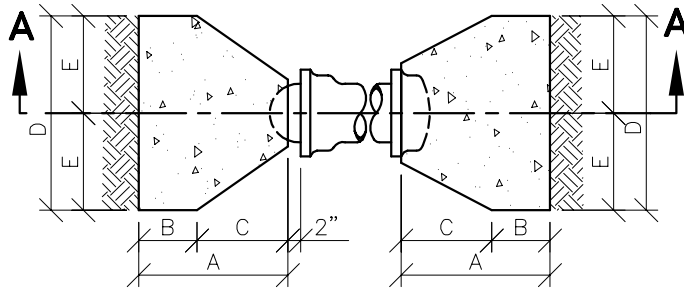


CONCRETE THRUST BLOCK FOR PLUGS AND CAPS



SECTION A-A



PLAN

SIZE OF PIPE (IN)	A MIN. (FT)	B MIN. (FT)	C (FT)	D (FT)	E (FT)	F (FT)	G (FT)
6	1.92	0.75	1.17	2.50	1.25	1.50	0.75
8	1.92	0.75	1.17	3.00	1.50	2.00	1.00
12	2.08	0.75	1.33	4.00	2.00	3.00	1.50
16	2.67	1.00	1.67	5.00	2.50	4.00	2.00

NOTE

THE THRUST BLOCK FACE SHALL BE POURED AGAINST UNDISTURBED EARTH.

THE DESIGN ENGINEER IS RESPONSIBLE FOR ENSURING THAT THE THRUST BLOCKS ARE CORRECTLY SIZED FOR EACH APPLICATION.

C					
B					
A					
	DESCRIPTION	DRW	CKD	APP	DATE
REVISIONS					
DRAWN BY: S.D.A.					
CHECKED BY: S.D.A.					
APPROVED:					

THRUST BLOCK, PLUGS AND CAPS (TRADITIONAL DWSD SIZING)

SCALE: NONE

CITY OF DETROIT
WATER AND SEWERAGE
DEPARTMENT
ENGINEERING
DIVISION

SHEET 1 OF 1

02620-23
DWG No.