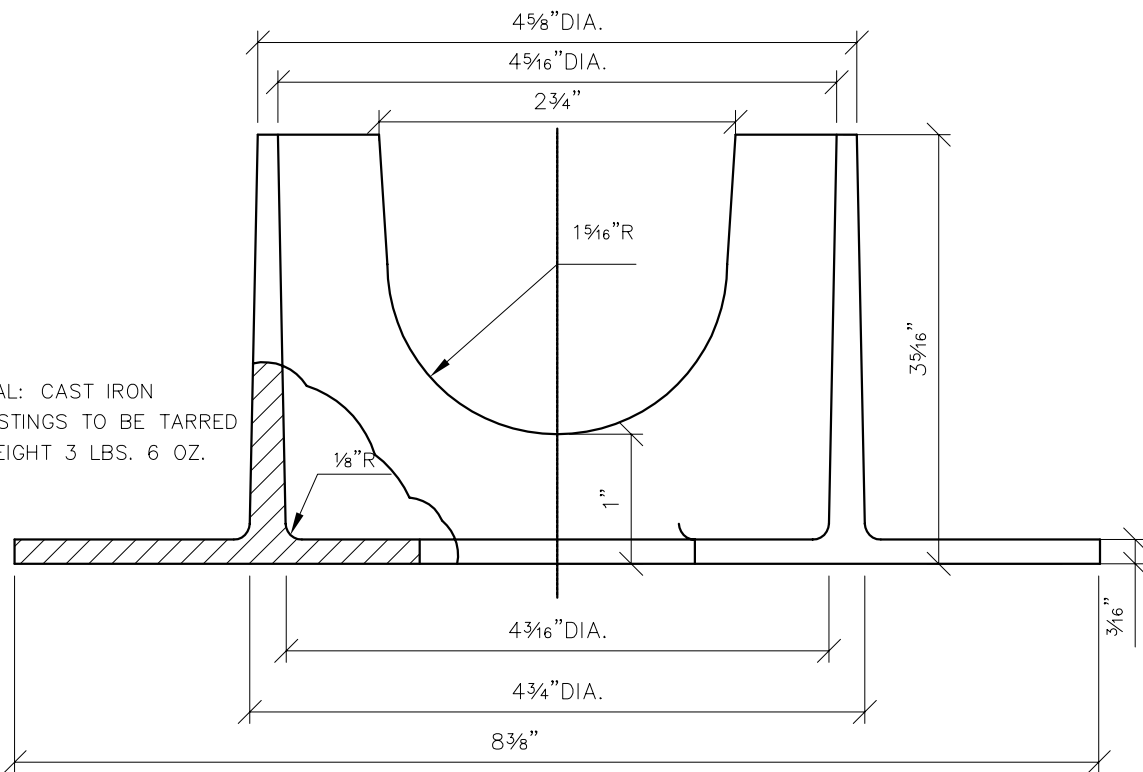


PLAN



SECTION

NOTE
 MATERIAL: CAST IRON
 ALL CASTINGS TO BE TARRED
 'HOT WEIGHT 3 LBS. 6 OZ.

C					
B					
A					
	DESCRIPTION	DRW	CKD	APP	DATE
REVISIONS					
DRAWN BY: S.D.A.					
CHECKED BY: S.D.A.					
APPROVED:					

**VALVE, HOLDER,
 1 1/2 INCH
 SERVICE**

SCALE: NONE

CITY OF DETROIT
 WATER AND SEWERAGE
 DEPARTMENT
 ENGINEERING
 DIVISION

SHEET 1 OF 1

DWG No. 02620-30