

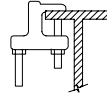
ADJ. STEEL CLEVIS
TYPE-1



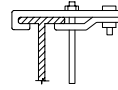
ADJ. STEEL
BAND HGR
TYPE-7



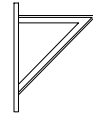
STEEL TURNBUCKLE
TYPE-13



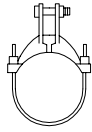
TOP BEAM
C-CLAMP
TYPE-19



TOP I-BEAM CLAMP
TYPE-25



LIGHT WELDED
STEEL BRACKET
TYPE-31



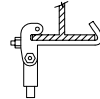
ALLOY STEEL
PIPE CLAMP
TYPE-2



EXTENSION PIPE ON
RISER CLAMP
TYPE-8



STEEL CLEVIS
TYPE-14



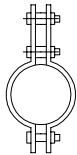
SIDE I-BEAM ON
CHANNEL CLAMP
TYPE-20



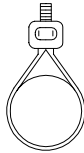
CLIP
TYPE-26

MEDIUM WELDED
STEEL BRACKET
TYPE-32

HEAVY WELDED
STEEL BRACKET
TYPE-33



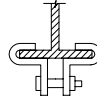
CARBON OR ALLOY
STEEL DOUBLE BOLT
PIPE CLAMP
TYPE-3



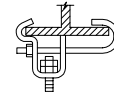
ADJUSTABLE
BAND HGR
TYPE-9



SWIVEL
TURNBUCKLE
TYPE-15



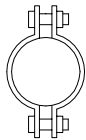
CENTER I-BEAM
TYPE-21



SIDE I-BEAM CLAMP
TYPE-27



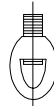
SIDE BEAM BRACKET
TYPE-34



STEEL PIPE CLAMP
TYPE-4



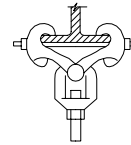
ADJ. SWIVEL RING
BAND TYPE
TYPE-10



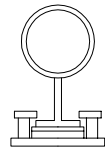
MALLEABLE
IRON SOCKET
TYPE-16



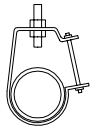
WELDED
ATTACHMENT
TYPE-22
AS SHOWN OR
INVERTED LESS BOLT



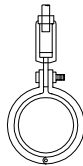
STEEL I-BEAM CLAMP
W/ EYE NUT
TYPE-28



PIPE SLIDE &
SLIDE PLATE
TYPE-35



PIPE HANGER
TYPE-5



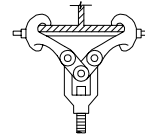
SPLIT PIPE W/WO
TURNBUCKLE ADJ.
TYPE-11



STEEL WELDLESS
EYE NUT
TYPE-17



C-CLAMP
TYPE-23



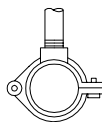
STEEL W.F. CLAMP
W/ EYE NUT
TYPE-29



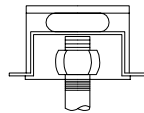
PIPE SADDLE
SUPPORT
TYPE-36



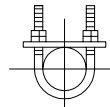
ADJ. SWIVEL PIPE RING
SPLIT RING TYPE OR
SOLID RING TYPE
TYPE-6



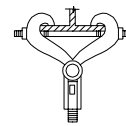
EXTENSION SPLIT
PIPE CLAMP
HINGED OR TWO BOLT
TYPE-12



STEEL OR MALLEABLE
CONCRETE INSERT
TYPE-18



U-BOLT
TYPE-24



MALLEABLE BEAM CLAMP
W/EXTENSION PIECE
TYPE-30



PIPE STANCHION
SADDLE
TYPE-37

C					
B					
A					
	DESCRIPTION	DRW	CKD	APP	DATE
REVISIONS					
DRAWN BY: B & V					
CHECKED BY: S.D.A.					
APPROVED:					

HANGERS AND SUPPORTS

SCALE: NONE

CITY OF DETROIT
**WATER AND SEWERAGE
DEPARTMENT**
ENGINEERING
DIVISION

SHEET 1 OF 2

DWG No. 1-15140(A)