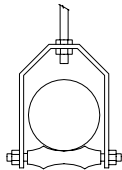
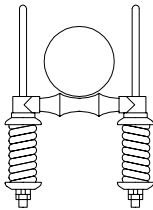


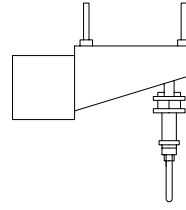
ADJUSTABLE PIPE SADDLE SUPPORT TYPE-38



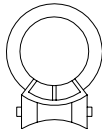
ADJUSTABLE ROLLER HANGER W/WO SWIVEL TYPE-43



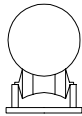
SPRING CUSHION ROLL TYPE 49



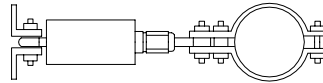
CONSTANT SUPPORT HORIZONTAL TYPE-54



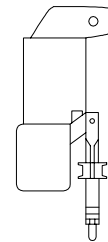
STEEL PIPE COVER PROTECTION SADDLE TYPE 39



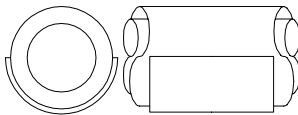
PIPE ROLL COMPLETE TYPE 44



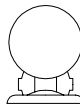
SPRING SWAY BRACE TYPE 60



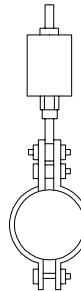
CONSTANT SUPPORT VERTICAL TYPE-65



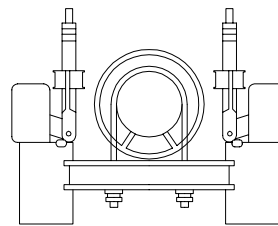
PROTECTION SHIELD TYPE-41



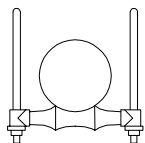
PIPE ROLL & PLATE TYPE-45



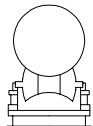
VARIABLE SPRING HANGER TYPE-61



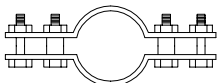
CONSTANT SUPPORT TRAPEZE TYPE-64



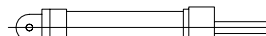
SINGLE PIPE ROLL TYPE-41



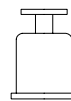
ADJUSTABLE PIPE ROLL & BASE TYPE-46



CARBON OR ALLOY STEEL RISER CLAMP TYPE-42



RESTRAINT CONTROL DEVICE TYPE-47



VARIABLE SPRING BASE SUPPORT TYPE-62

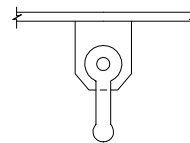
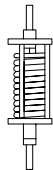
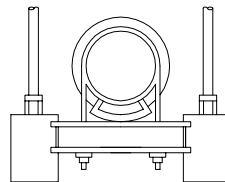


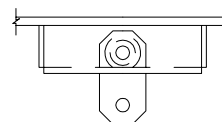
PLATE LUG TYPE-67



SPRING CUSHION TYPE-48



VARIABLE SPRING TRAPEZE HANGER TYPE-53



HORIZONTAL TRAVELER TYPE-58

|                    |             |     |     |     |      |
|--------------------|-------------|-----|-----|-----|------|
| C                  |             |     |     |     |      |
| B                  |             |     |     |     |      |
| A                  |             |     |     |     |      |
|                    | DESCRIPTION | DRW | CKD | APP | DATE |
| REVISIONS          |             |     |     |     |      |
| DRAWN BY: B & V    |             |     |     |     |      |
| CHECKED BY: S.D.A. |             |     |     |     |      |
| APPROVED:          |             |     |     |     |      |

# HANGERS AND SUPPORTS

SCALE: NONE

CITY OF DETROIT  
**WATER AND SEWERAGE DEPARTMENT**  
ENGINEERING DIVISION

SHEET 2 OF 2

DWG No. 1-15140(B)